



Faszination Technik



Range extender – Presse text

05.10.2023

**The LANG Range Extender FUENF-E is a newly developed micro ORC module that converts waste heat in the low temperature range into clean electricity starting at 60°C.**

**The recently available LANG range extender FUENF-E reduces energy costs, reduces CO2 emissions and is suitable for all types of drive solution in commercial vehicles.**

### **Economical from 60°C**

The hotter the thermal energy, the better the electrical efficiency and therefore the electrical power.

We can use the low temperature excess waste heat which is normally released unused into the environment.

But with the new low-temperature module, green CO2-neutral power generation is attractive - also from an economic point of view - **starting at 60°C.**

**The LANG Range Extender FUENF-E** works according to the well-known ORC cycle principle and is part of the proven LANG product range. In order to be able to implement projects as quickly as possible, LANG cooperates with proven bus system partners so that reliable standard components are used.

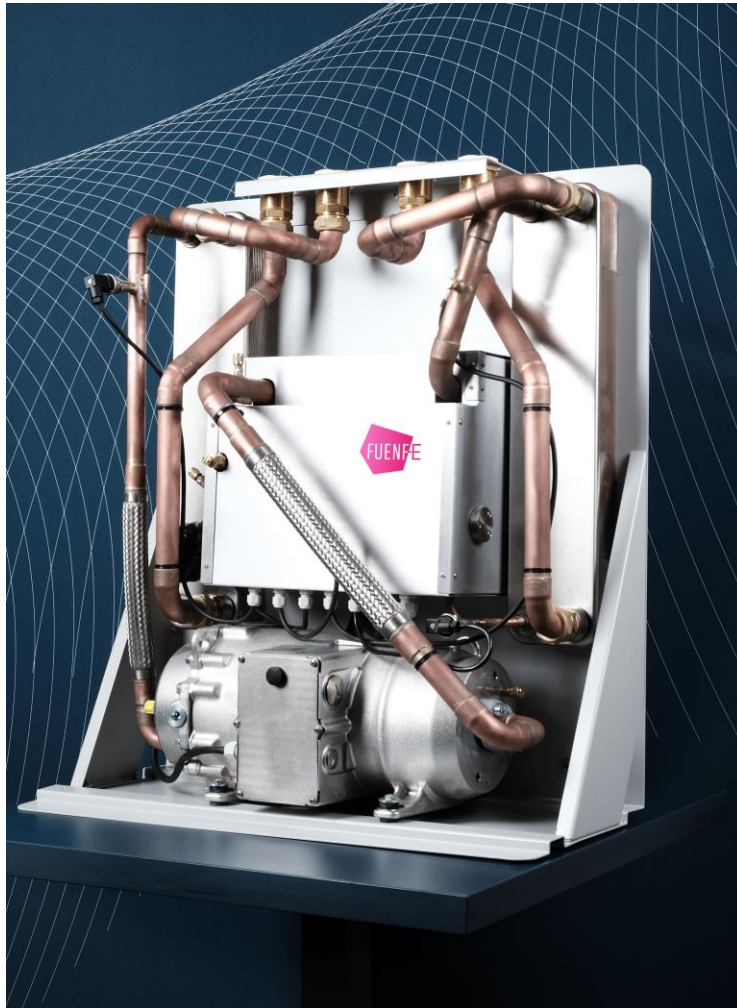
As a plug & play solution, **the LANG Range Extender FUENF-E** can be quickly and easily integrated into customer-specific systems.

### **Reduced CO2 emissions and extended range**

**The LANG Range Extender FUENF-E** generates green electrical energy from unused waste heat from the engine cooling or electric motors, which can be used directly to increase the vehicle range.

At the same time, the system makes a significant contribution to CO2 savings.





## TECHNICAL DATA

<b>Heat source</b>	Heat transfer fluid: water Temperature range: 60-95°C Volumetric flow rate: 2-5 m <sup>3</sup> /h
<b>Heat sink</b>	Heat transfer medium: water/ air Temperature range: 5-25 °C Volumetric flow rate: 2-5 m <sup>3</sup> /h (water)
<b>Power output</b>	Gross power 1-4 KW Voltage: AC 50/60 Hz 100-400 V DC 100-800 V
<b>ORC</b>	natural working fluid, EN3789 conformity GWP = 4 Dimension: 800x600x300mm Weight: 60 kg

# LANG –Bus professionals



Lang magnetic clutches are mainly used in the bus and coach industry. Reliable, durable, high quality products are our trademark. Our magnetic clutches are characterised above all by their extreme robustness and long lifetime. They are versatile and can handle even the greatest demands. We deliver innovative technology, top quality and the service of a modern technology provider, making us a major partner of the coach and utility vehicle industry all over the world.

## Quality, efficiency, value: a master's touch!

